

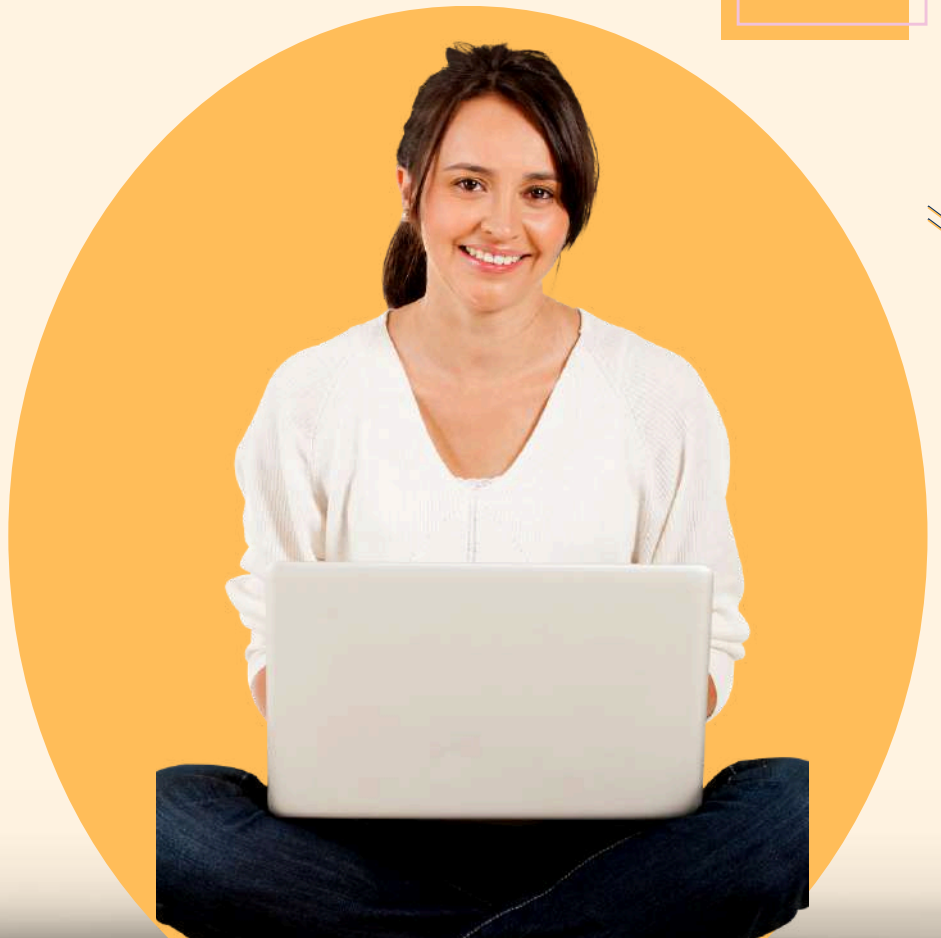
Certification in

# PCB Design

20Hours

## Interactive Learning

PCB Design course  
offered by  
LivetechINDIA.



*Enroll Now*

EDA | Circuit Design | Embedded  
System | IOT | Make in India



7506524072



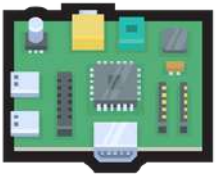
[www.livetechindia.com](http://www.livetechindia.com)



Andheri (West) Mumbai

# PCB DESIGN

## Concept



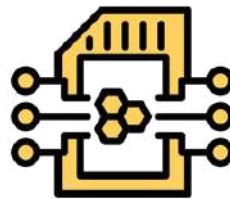
**Understanding  
Circuit**



**Create  
Schematic**



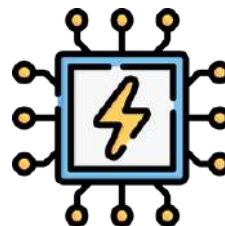
**Symbol  
Creation**



**BOM**



**EMI  
Considerations**



**PCB  
Designing**

# Syllabus

- Hierarchical Port, Net Property, Wire Property, Bus
- Components Create - Homogenous
- Introduction to PCB, Annotation, Components, Tools
- Drawing Basic Circuit, Wiring, Net Alias, Off page connector

- Transient Analysis
- AC Sweep, DC Sweep
- Component Create - Heterogenous
- Introduction to Pspice, Bias Point

- Routing - two layer and six layer
- Procedure for Gerber file
- How to create netlist, BOM, DRC Update, Assign Footprint
- Add component in PCB Editor, Routing - single layer

- Submission
- Create Footprint and PAD in PAD STACK Designer
- Practice