

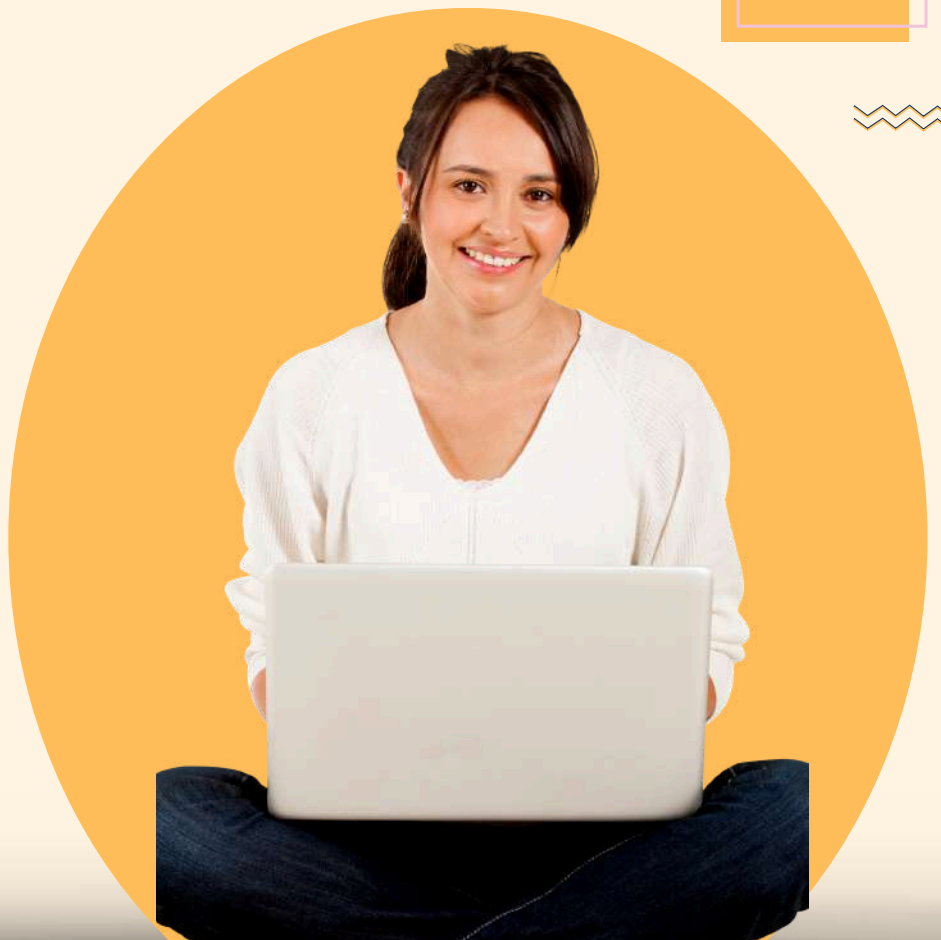
Certification in

# Python Programming

(1 MONTH)

## Interactive Learning

Python Programming course offered by LivetechINDIA.



*Enroll Now*

Enroll today and learn the most demanding skill of 2024

# PYTHON PROGRAMMING

## Concept



**Data  
Structures**



**File  
Handling**



**Errors  
Handling**



**Database  
Connectivity**



**OOPS  
Concept**



**Data Analytics  
Library**

(Numphy,panda,Matplotlib,Seaborn)

# PYTHON

# SYLLABUS

## INTRODUCTION TO PYTHON

- Difference between High level and low level language
- Environmental Setup, IDE, 3 Types of Windows
- Basic Input Output
- Variables, Constant, Data Types
- Typecast and identify the types of data
- Math, Logical and Conditional Operators

## Control Flow Structure

- If Else Statement;, If Elif nested: Loop: For loop and While loop
- Jumping Statements: Break and, Continue Statement
- Random Library: Random Functions

## Functions

- User Defined Functions
- Built In Functions
- Arbitrary Functions

## Data Structures

- List, Tuple
- Dictionary , Set & String

## Modules & Package

- How to create packages
- Functions
- Usage of Module and Packages

## File Handling

- Where we using File handling concept nowadays
- Method
- Reading the data from File
- Writing the content in it Appending Fille

## Object Oriented Programming

- Concepts of class, object and instances
- Constructor class attributes
- Inheritance
- Encapsulation
- Polymorphism

## Errors and Exception Handling

- What are Errors ?
- Different types of errors
- What is Exception Handling? Try, Except and Finally

## Python Multithreading

- Understanding threads
- Synchronizing the threads
- Programming using multithreading

## Standard Template Library

- What is Standard Template Library
- Programs using Standard Library

## Database connectivity using python

- What is Database
- Python Database Interaction
- SQL Database connection using python
- Creating and searching tables
- Reading and storing config information on database
- Programming using database connections

## Python GUI Introduction

- What is GUI?
- Creating Textbox, Listbox
- GUI with Data Connectivity

Python

**Syllabus**

**Python  
Libraries**

- Numpy
- Pandas
- Matplotlib
- Seaborn