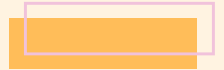




Data Analytics With Data Science

6 Month



With Placement Guarantee in
Mumbai

Dual Certification



Enroll Now



9967111302



www.livetechindia.com



Andheri | Panvel





TABLEAU COURSE

With Placement Guarantee in Mumbai



Enroll Now



9967111302



www.livetechindia.com



Andheri | Panvel





ABOUT US

LivetechINDIA team ensures simplifying complex technologies.

Today top most IT training institute in INDIA catering programs like Artificial Intelligence, Data Science, IOT and Software Development

- 25+ Corporate Clients
- 5000+ Students trained
- 100+ Institutes / Universities Associations

CORPORATE TRAININGS



SPJIMR (Top B-School)



Artificial Intelligence Training in Indian Railway

Concept

TABLEAU



Tableau helps people and organizations be more data-drive

DATA ANALYTICS

Concept

Advanced Excel



Advanced Excel skills include the ability to produce graphs and tables.

Google sheets



To organize data, create formulas, build charts, and collaborate in real-time for data analysis.

LOOKER STUDIO



Looker Studio skills include the ability to create interactive reports, dashboards, and visualize data to uncover insights and trends.

Power BI



Power BI is a collection of software, apps, and connectors that work to turn your unrelated sources of data

SQL



SQL skills include the ability to query databases, manage data, and perform data analysis through complex joins and aggregations.

TABLEAU



Tableau helps people and organizations be more data-drive

DATA SCIENCE

Concept

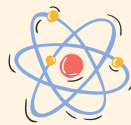
Python Programming



Python is a computer programming language often used to build websites and software, automate tasks.

Data Science Library

- NumPy
- pandas
- Matplotlib
- Seaborn



Machine Learning



Machine learning is a subfield of artificial intelligence that uses statistical algorithms to learn from data

PREDICTIVE ALGORITHMS

A predictive algorithm uses data and statistical methods to forecast future events or trends.



Advanced Excel

Introduction to Advanced Excel

- Tools overview, Keyboard shortcuts, Quick access toolbar, Navigating with keyboard only, Basics of Excel (cell, range, workbook, worksheet)

MathFunctions:

- SUM, SUMIF, SUMIFS, SUMPRODUCT, MIN, MAX, AVERAGE, ROUND, ROUNDUP, ROUNDDOWN, MOD
Statistical Functions: MEDIAN, MODE, RANK, PERCENTILE, QUARTILE, VAR, STDEV

Logical Functions:

- IF, Nested IF, IFS, SWITCH, AND, OR, NOT, TRUE, FALSE
Error handling: IFERROR, IFNA

Text Functions:

- UPPER, LOWER, PROPER, TRIM, LEN, CONCAT, TEXTJOIN, LEFT, RIGHT, MID, SUBSTITUTE, REPLACE, FIND, SEARCH, TEXT, VALUE

Date & Time Functions:

- TODAY, NOW, DAY, MONTH, YEAR, WEEKDAY, WEEKNUM, ISOWEEKNUM, EOMONTH, EDATE, WORKDAY, NETWORKDAYS, DATEDIF, YEARFRAC, HOUR, MINUTE, SECOND

Advanced Excel

Financial Functions:

- PMT, IPMT, PPMT, PV, FV, NPER, RATE, Depreciation Functions Information Functions: ISBLANK, ISNUMBER, ISTEXT, ISERROR
- Excel 365 / Google Sheets Functions: UNIQUE, FILTER, SORT, SORTBY, SEQUENCE, LET, LAMBDA
- Time Intelligence – Basics: Start & End of Month (EOMONTH), Start & End of Quarter, Rolling dates with EDATE, Working days with NETWORKDAYS, Aging with DATEDIF, YEARFRAC Time Intelligence – Analysis with SUMIFS: MTD Sales, QTD Sales, YTD Sales, Days left in month, YOY comparison (Current vs Previous Year)
- Sorting & Filtering: Single/Multi-level sort, Custom Sort, Advanced Filter with Criteria Range, FILTER function, Slicers for tables & pivots Data Cleaning: Flash Fill, Remove Duplicates, Text-to-Columns, CLEAN function, Handling blanks, Find & Replace, Remove extra spaces

**Advanced
Excel****Data Consolidation & Validation:**

- Consolidate from multiple sheets, Formula Auditing (Trace precedents/dependents, error checking) Data Validation (drop-down, input messages, error alerts) What-If Analysis: Goal Seek, Scenario Manager, Data Tables
- Lookup Functions: VLOOKUP (variations)
- Lookup Functions: VLOOKUP (variations)
- Lookup Functions: VLOOKUP (variations), HLOOKUP, INDEX + MATCH, XLOOKUP

**Advanced
Excel****Reference Functions:**

- OFFSET, INDIRECT, CHOOSE
- Pivot Tables: Creating pivot tables, Customizing layouts, Grouping data, Calculated fields & items
- Dashboarding in Excel: Charts (Column, Line, Pie, Combo, Waterfall, Funnel), Conditional formatting for dashboards, Slicers & Timeline Filters, Form Controls (Dropdowns, Checkboxes, Sliders)
- Google Sheets Dashboards: Google Charts, Explore tool for quick analysis, Applying filters & slicers in Sheets

**Advanced
Excel**

- VBA Basics & Macros (variable, syntax, keywords, data types, input and output functions)
- Intermediate VBA & Automation (conditional statement, data cleaning)
- Macros, Google Sheets
- App Script

Google Sheets & App Script

Introduction to Google Sheet

- Data Manipulation Logical Functions in Google Sheets Lookup Functions in Google Sheets Data Management in Google Sheets Pivot table Share your google sheets Charts in google sheets Functions in google sheets Text, images, objects in google sheets
- Introduction to Google Apps Script
- Operators and Conditions
- Functions in Google Apps Script
- Working with Arrays
- Objects in Google Apps Script
- Loops in Google Apps Script

Looker Studio

Introduction to Looker Studio

Chart types in google looker studio

- 1.Bar,
- 2.time series,
- 3.geo maps,
- 4.scatter plots,
- 5.Gauge Chart

Filters

- like Drop-Down , Slider , Date range Control

Creating Dashboards

- In Looker Studio Key Performance Indicators (KPIs) in Looker Studio Looker Studio.

Advanced Features

- Sharing & Collaboration in Looker Studio
Calculated fields
- **Calculated Fields**

Power BI**INTRODUCTION TO POWER BI :**

- Downloading, Installing, and Activating the New Features in Power BI.

BASIC CHARTS IN POWER BI :

- Section Overview , Creating a Column Chart in Power BI ,Creating a Stacked Column Chart in Power BI , Creating a Pie Chart in Power BI , Creating a Donut Chart in Power BI , Creating a Funnel Chart in Power BI , Creating a Ribbon Chart in Power BI , Include and Exclude in Power BI , Exporting Data from Visuals.

MAPS IN POWER BI :

- Basic Maps in Power BI , Creating a Filled Map Creating a Map with a Pie Chart , Formatting a Map , Changing the Background in a Map , Creating the Map of India in Power BI , Creating the Map of Australia in Power BI.

Power BI**TABLES AND MATRIX IN POWER BI :**

- Creating a Table , Formatting a Table , Conditional Formatting in a Table , Aggregation in a Table , Matrix , Conditional Formatting in a Matrix. , Hierarchies in a Matrix , Sub-Total and Total in a Matrix , Formatting Numbers in a Table.

OTHER CHARTS IN POWER BI :

- Section Introduction , Line Chart in Power BI , Drill Down Line Chart in Power BI , Area Chart in Power BI , Line Chart versus Column Chart in Power BI , Scatter Plot in Power BI , Waterfall Chart in Power BI , Gauge Chart in Power BI..

Power BI**Advanced Charts in Power BI**

- Creating an Animated Bar Chart Race , Drill Down Donut Chart Drill Down Column Chart
- Creating a Word Cloud in Power BI, Creating a Sankey Chart in Power BI , Creating an Infographic in Power BI
- Creating a Play Axis in Power BI , Creating a Scroller in Power BI , Creating a Sunburst Chart in Power BI Creating a Histogram in Power BI.

Power BI**POWER BI OBJECTS, BOOKMARKS, AND ACTIONS:**

- Inserting Images in Power BI , Inserting Text in Power BI , Inserting Shapes in Power BI , Inserting Buttons in Power BI , Inserting a Web Uniform Resource Locator (URL) in Power BI , Inserting a Page Navigation Option in Power BI

TEXT FUNCTIONS IN POWER QUERY:

- Text Functions in Power Query , Merging Columns in Power Query , Split and Trim Functions , Upper Case, Lower Case and Proper Case , Adding Prefixes and Suffixes , Left, Right, and Mid Functions in Power Query , Extracting Text with Delimiters.

DATE FUNCTIONS

- Date Functions , Year, Quarter, and Day Functions , Difference between Dates , Month and Day Name , Finding Day and Week of the Week/Month/Year , Extracting the Date and Time Calculating Age , Day of Year, Quarter, or Month.

Power BI**NUMBER FUNCTIONS IN POWER QUERY**

- Number Functions , Basic Number Functions , Percentage, Percent of, and Modulo Functions , Rounding Off Functions , IsEven and IsOdd Functions.

Basic DAX:

- Measures, Calculated, Columns, Table functions Basic Dax Text Functions : Upper , lower, len, left , right, replace Logical functions : If , And , Or, && , ll
- Date functions : Year , month , day, calendar

Intermediate :

- Calculate, filter, related
- Filter function : Keep filter, remove filter, All, All selected, All except

Advanced :

- Time Intelligence Function
- MTD, YTD, QTD
- Same period last year
- Parallel period
- Group by Dax
- Dax studio Basics

M LANGUAGE:

- M Language , Introduction to M Language ,
- ISINDATE Function in M Language Adding and Subtracting Dates Using M Functions
- Basic Date M Functions , Basic Text M Functions

Tableau**INTRODUCTION TO TABLEAU****Tableau Architecture**

- Live vs Extract
- Tableau File Types
- Tableau Desktop Architecture
- Tableau Server Architecture

Prepare the Environment

- Download & Install Tableau Public
- Create Tableau Public Account
- Get Training Datasets
- Publish First Viz
- Tour into the Tableau Interface

Combining data

- Basics Data Modeling
- Logical & Physical Layers
- Join
- Union
- Relationships
- Data Blending
- Summary: Combining Methods

Tableau Metadata

- Data Types
- Geographic & Image Roles
- Dimensions & Measures
- Discrete vs Continuous
- Summary: Tableau Metadata

Renaming & Aliases

- Naming Conventions
- Renaming
- Aliases

Tableau**Organizing Data**

- Hierarchy
- Groups
- Cluster Group
- Sets
- Bins & Histograms

Filtering & Sorting Data

- Understand Tableau Filters
- How to Create Filters
- Customizing Filter

Tableau Calculations

- Types of Tableau Calculations Number Functions String Functions Date Functions Null Functions Logical Functions Aggregate Functions Attribute Function ATTR() Fixed Exclude Include Tableau Chart Tableau Dashboards Tableau Project
- Tableau Calculations Types of Tableau Calculations Number Functions String Functions Date Functions Null Functions Logical Functions Aggregate Functions Attribute Function ATTR() Fixed Exclude Include

- **Tableau Chart**

- **Tableau Dashboards**

- **Tableau Project**

SQL

- SQL Introduction Theory, Installation, Create Database use database, create tables, drop tables, insert data show data
- **Where clause with operators**, and or not, in, between, like, wildcard
- data types in detail, built in functions, date time functions, aggregate functions, aliasing
- order by clause, **group by** clause, distinct clause limit clause
- update statement, delete statement alter statement
- **Constraints**
- **Joins**
Inner join,
Outer join,
Cross join,
Self join
- **Sub queries**
- Excel connection
- views
- while if else ,exists
- **Windows Functions**
- CTE
- Triggers
- **Stored Procedure**
- case study

VBA**VBA Editor**

- Project Explorer, Code Window, Properties Window, Toolbars , Immediate Window , Locals Window , Watch Window

Variables and Data Types

- Declaring variables, data types, Dim, Static, Global

Control Structures

- Conditional: If...Then...Else, Select Case
- Loops: For, For Each, Do While, Do Until

Procedures

- Subroutines: Actions without return
- Functions: Actions with return values

Event-Driven Programming

- Workbook, Worksheet, and User-triggered Events

Error Handling

- On Error Resume Next, On Error GoTo

Objects and Collections

- Worksheets, Workbooks, Ranges, Methods, Properties

Advanced Loops

- Nested loops, For Each, Exit and performance tips

Python

Introduction to Python

- Basics of variables,i/o and o/p function
- Logical and conditional Operators

- **Conditional Statement**

- If
- if elif else
- nested Condition

- **Loops**

- For Loop
- While loop
- break statement
- continue statement

- Data Structure

- List,Tuple

- Set ,Dictionary

- Functions Modules and Packages

OOPs-Class object Declaration,

- Inheritance
- Polymorphism
- Multi-Threading ,
- Basic Database
- Error Handling
- Numpy ,
- Pandas,
 - series
 - dataframe
- Matplotlib
- Seaborn

Syllabus

Complete Machine Learning Roadmap (Theory + Practice)

Chapter 1: Foundations

- Programming Skills
- Python (NumPy, Pandas, Matplotlib, Plotly)
- Mathematics for ML
- Calculus (gradients, partial derivatives)
- Probability & Statistics (Distributions)
- Optimization basics (Gradient Descent, cost functions)

Machine Learning

Chapter 2: Data Handling & Exploration

- Exploratory Data Analysis (EDA)
- Understanding the dataset: shape, types, missing values
- Descriptive statistics & visualizations
- Data Preprocessing
- Handling missing values
- Handling outliers
- Categorical encoding (One-Hot, Label Encoding)
- Feature scaling (Normalization, Standardization)

Chapter 3: Feature Engineering & Selection

- Feature Engineering
- Creating new features from existing data
- Domain-specific feature construction
- Feature Selection
- Forward/Backward elimination
- Univariate selection
- Feature importance (Random Forest)
- Decision tree-based selection

Syllabus

Machine Learning

Chapter 4: Core Machine Learning Concepts

Types of ML

- 1. Supervised Learning
- Regression: Linear Regression, Polynomial Regression, KNN Regression, Decision Tree Regressor, Random Forest, SVR, XGBoost
- Classification: Logistic Regression, KNN, Naïve Bayes, Decision Tree, Random Forest, SVM, XGBoost
- 2. Unsupervised Learning
- Clustering: K-Means, Hierarchical Clustering
- Anomaly Detection
- 3. Reinforcement Learning (basic intro)

Chapter 5: Model Evaluation & Validation

- Splitting Data
- Train/Test/Validation sets
- Cross-validation (K-Fold, Stratified)
- Metrics
- Regression: MSE, RMSE, MAE, R^2
- Classification: Accuracy, Precision, Recall, F1-score, ROC-AUC
- Bias-Variance Tradeoff
- Underfitting vs Overfitting
- Regularization (L1, L2)

Chapter 6: Advanced Topics

- Dimensionality Reduction
- PCA (Principal Component Analysis)
- t-SNE, UMAP (for visualization)
- Ensemble Methods
- Bagging, Boosting, Stacking
- Recommendation Systems
- Collaborative Filtering
- Content-Based Filtering
- Hybrid Methods

Syllabus

Machine Learning

Chapter 7: End-to-End ML Project Workflow

- Problem Understanding
- Data Collection
- Data Cleaning & EDA
- Feature Engineering
- Model Selection & Training
- Hyperparameter Tuning
- Model Evaluation
- Deployment
- Monitoring & Maintenance

Chapter 8: Practical Implementation Path

- Suggested hands-on progression for students:
- Start with small datasets (Iris, Titanic)
- Implement algorithms from scratch (for understanding)
- Move to Scikit-learn for practical use
- Work on domain-specific datasets (finance, healthcare, manufacturing)
- Create 2–3 end-to-end projects, including deployment
- Explore Kaggle competitions for real-world scenarios

Machine Learning Tools :

- Python – the primary ML language.
- IDEs: Jupyter Notebook, Google Colab, VS Code.
- Libraries:
- NumPy → numerical computations
- Pandas → data manipulation
- Matplotlib, Seaborn, Plotly → visualization

Basic ML Libraries-

- scikit-learn → regression, classification, clustering, model evaluation.
- statsmodels → statistical modeling & hypothesis testing.

PLACEMENT



100% PLACEMENT ASSURANCE PROGRAM

We are confident that this course delivers on its promises. However, we want you to experience the same. Accordingly, we are making this bold promise, not given by anyone else in the industry

PATHWAY

1 PROJECT PREPARATION AND LIVE PROJECT PRESENTATION

2 RESUME BUILDING

3 INTERVIEW PREPARATION

4 INTERVIEW OPPORTUNITIES TILL PLACEMENT

5 GET PLACED !!!

LivetechnINDIA

PLACED STUDENTS



Geetesh Sarang
Got Placed at **TATA AIG**



Chetan More
Got Placed at **Diacto**



Neha Patil
Got Placed at **Capgemini**



Shweta Rane
Got Placed at **Larsen & Toubro Infotech**



Ankit Singh
Got Placed at **Vistaar Digital Communication Pvt Ltd**



Priyanka
Got Placed at **Violet Infosystem**



Loganathan
Got Placed at **Larsen & Toubro**



Nishant Raut
Got Placed at **Archstore**



Saloni Shinde
Got Placed at **Datacloudgaze Pvt Ltd**

PLACEMENT PARTNERS



L&T Infotech



WITH YOU ALWAYS

Capgemini 



GET YOURSELF CERTIFIED



CERTIFICATE OF COMPLETION

YOUR NAME

On successful completion of
"Data Analytics " training.

Student Id: XXXXXXXXXXX

A handwritten signature in blue ink, appearing to read 'Swapnil Darekar'.

Swapnil Darekar
Centre Head

Date of Completion

ISO

**9001:2015 &
29990:2010**
CERTIFIED INSTITUTION



GET YOURSELF CERTIFIED



CERTIFICATE OF COMPLETION

YOUR NAME

On successful completion of
"Data Science" training.

Student Id: XXXXXXXXXXX

A handwritten signature in blue ink, appearing to read "Swapnil Darekar".

Swapnil Darekar
Centre Head

Date of Completion

The ISO logo, consisting of the letters "ISO" in white on a blue background.

9001:2015 &
29990:2010
CERTIFIED INSTITUTION

